

Cho Benn Holback + Associates

ARCHITECTS
 CHO BENN HOLBACK + ASSOCIATES, INC.
 100 NORTH CHARLES STREET
 14th FLOOR
 BALTIMORE MD 21201
 410 576 0440

MECH / ELECT ENGINEERS
 JAMES POSEY ASSOCIATES, INC.
 3112 LORD BALTIMORE DRIVE
 BALTIMORE, MD 21224
 410 265 6100

FOOD SERVICE
 H.E. WILLIAMS ASSOCIATES
 224 HUNTINGTON LANE
 BLACKSBURG, VA 24060
 540 951 1391

INTERIOR DESIGN
 Z SQUARED INC.
 14 EAST MAIN STREET
 OYSTER BAY, NY 11771
 516 922 1546

SEAL
 PROFESSIONAL CERTIFICATION
 I CERTIFY THAT THESE DOCUMENTS WERE PREPARED OR
 APPROVED BY ME AND THAT I AM A DULY LICENSED ARCHITECT
 UNDER THE LAWS OF THE STATE OF MARYLAND.
 LICENSE NUMBER: 044444#2009 EXPIRATION DATE: 04/30/2012

PROJECT NAME:
**UMB STUDENT CENTER
 FOOD SERVICES**
 CBH PROJECT NO: 20772
 UMB PROJECT NO: 99-311.02

621 WEST LOMBARD STREET
 UNIVERSITY OF MARYLAND
 BALTIMORE MD

CONSTRUCTION DOCUMENTS
 05 FEBRUARY 2009

MARK	DATE	DESCRIPTION

DWG FILE: 20772 A101.DWG
 DRAWN BY: AB
 CHECKED BY: AB

COPYRIGHT © 2008 CHO BENN HOLBACK + ASSOCIATES
 CONTRACTOR SHALL CHECK AND VERIFY ALL DIMENSIONS AND
 EXISTING CONDITIONS BEFORE PROCEEDING WITH THE WORK.

FIRST FLOOR
 PLAN

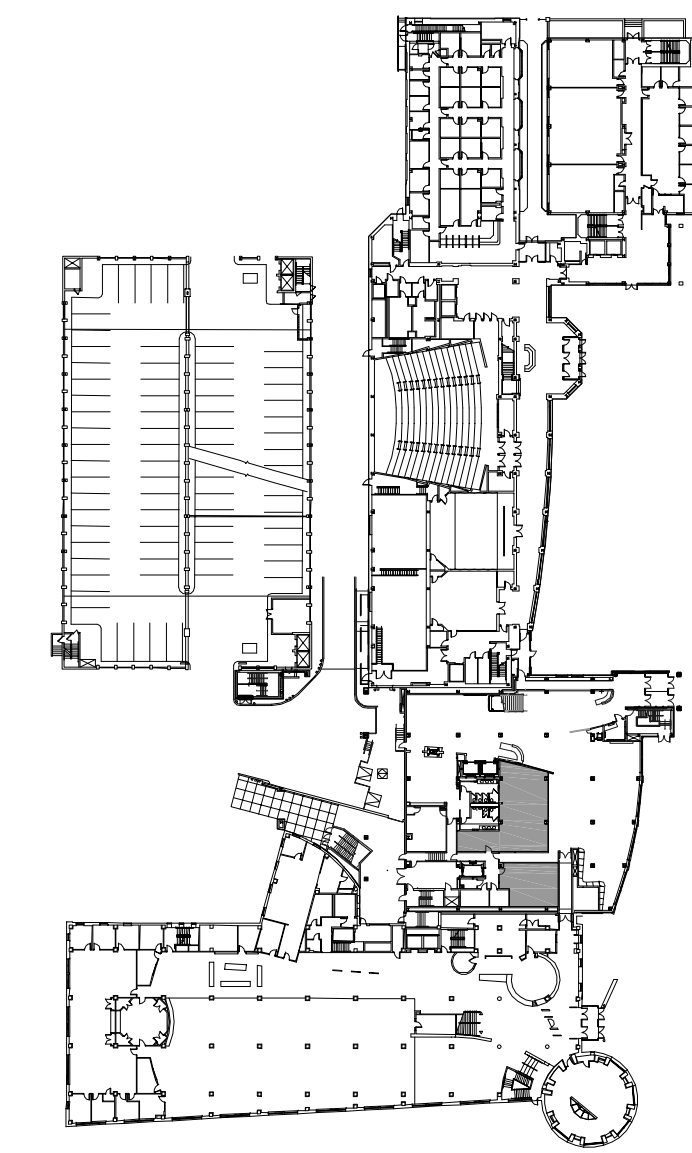
A101

GENERAL NOTES:

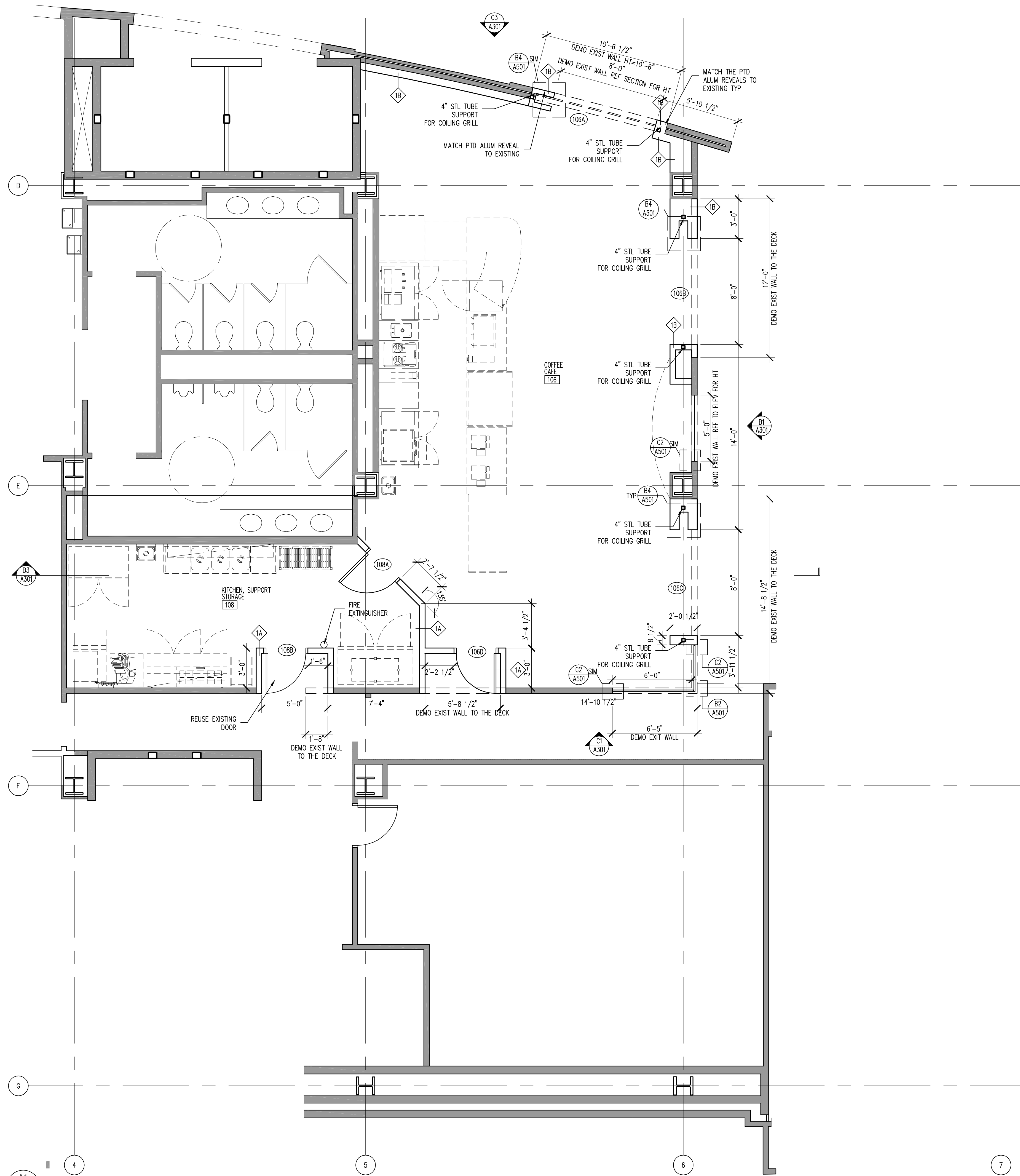
- UNLESS OTHERWISE NOTED, PLAN DIMENSIONS ARE TO COLUMN GRID CENTERLINES AND FACE OF GYPSUM BOARD PARTITIONS, WALL PROTECTION, WALL COVERINGS, CERAMIC TILES AND OTHER WALL FINISHES ARE INSTALLED BEYOND DIMENSION LINE.
- ALL WORK IS NEW UNLESS OTHERWISE NOTED.
- DIMENSIONS NOTED "CLEAR" ARE TO FACE OF PARTITION FINISH.
- NUMERICAL DIMENSIONS SHALL TAKE PRECEDENCE OVER SCALED DIMENSIONS.
- WHERE DOOR IS LOCATED NEAR THE CORNER OF ROOM AND IS NOT LOCATED BY DIMENSION ON PLAN OR DETAIL, DIMENSION SHALL BE 4-INCHES FROM FACE OF PARTITION TO DOOR OPENING.
- VERIFY ALL ROUGH-IN DIMENSIONS FOR EQUIPMENT PROVIDED IN THIS CONTRACT OR BY OTHERS.
- REPETITIVE FEATURES ARE NOT DRAWN IN THEIR ENTIRETY AND SHALL BE COMPLETELY PROVIDED AS IF DRAWN IN FULL.
- VERIFY IN FIELD ALL EXISTING DIMENSIONS.
- VERIFY SIZE AND LOCATION OF, AND PROVIDE: ALL OPENINGS THROUGH FLOORS AND PARTITIONS, ACCESS DOORS, FURRING, CURBS, ANCHORS AND INSERTS. PROVIDE ALL BASES AND BACKING REQUIRED FOR ACCESSORIES AND FOR ELECTRICAL, MECHANICAL AND OTHER EQUIPMENT.
- SEE DRAWING A000 FOR TYPICAL GRAPHIC SYMBOLS.
- SEE DRAWING A601 FOR TYPICAL PARTITION SCHEDULE AND DETAILS.
- SEE DRAWING A111 FOR TYPICAL CEILING NOTES.
- PARTITION TAG LOCATIONS DESIGNATE THAT PARTITIONS SHALL BE OF THE SAME TYPE CONSTRUCTION BETWEEN THE CORNERS OF THE SIDE OF THE WALL THAT THE TAG IS LOCATED.
- ADJACENT, IN LINE PARTIONS OF DIFFERENT TYPES SHALL BE CONSTRUCTED SUCH THAT EXPOSED, FINISH SURFACES ARE FLUSH AND CONTINUOUS.
- UNLESS OTHERWISE NOTED, PROVIDE FLOOR FINISH TRANSITIONS AT ALL LOCATIONS WHERE DIS-SIMILAR FLOOR MATERIALS ABUT.
- PATCH AND LEVEL ALL FLOORS AS REQUIRED, UNLESS OTHERWISE NOTED.
- PATCH WALL PENETRATIONS AIRTIGHT AT EXISTING PIPE CHASES, ETC TYPICAL.

LEGEND:

- INDICATES EDGE OF BASE CABINETS
- INDICATES WALL CABINETS ABOVE
- INDICATES WALL CONSTRUCTION
- INDICATES FULL HEIGHT INTERIOR GLAZING
- INDICATES EXISTING WALL



A4
 A101
 NTS
 1ST FLOOR KEY PLAN



A1
 A101
 1ST FLOOR PLAN
 1/4" = 1'-0"

ARCHITECTS

CHO BENN HOLBACK + ASSOCIATES, INC.
100 NORTH CHARLES STREET
BALTIMORE, MD 21201
410.578.0400

MECH / ELEC ENGINEERS

CHO BENN HOLBACK + ASSOCIATES, INC.
3172 LOBO BALTIMORE DRIVE
BALTIMORE, MD 21224
410.265.6100

FOOD SERVICE

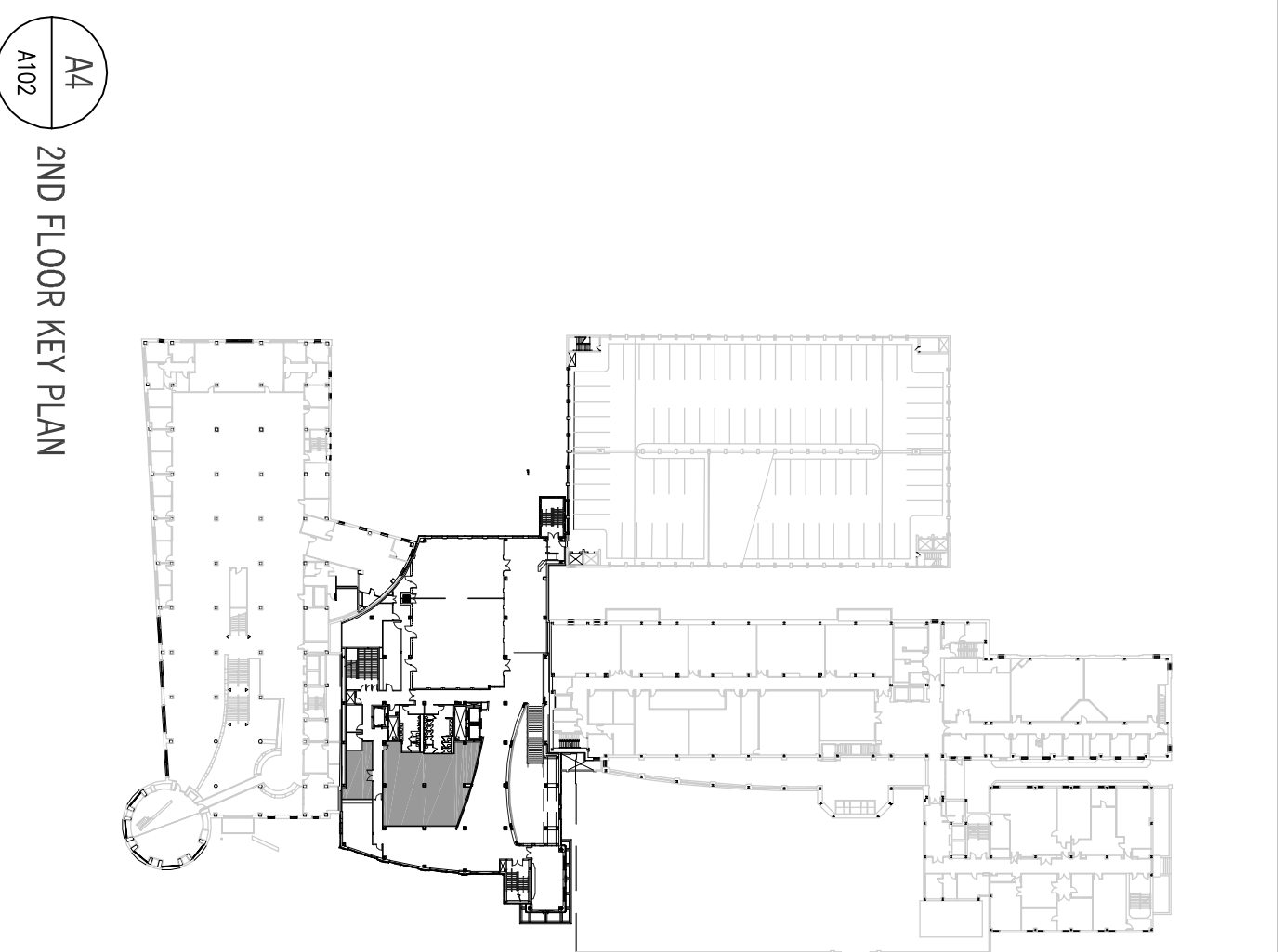
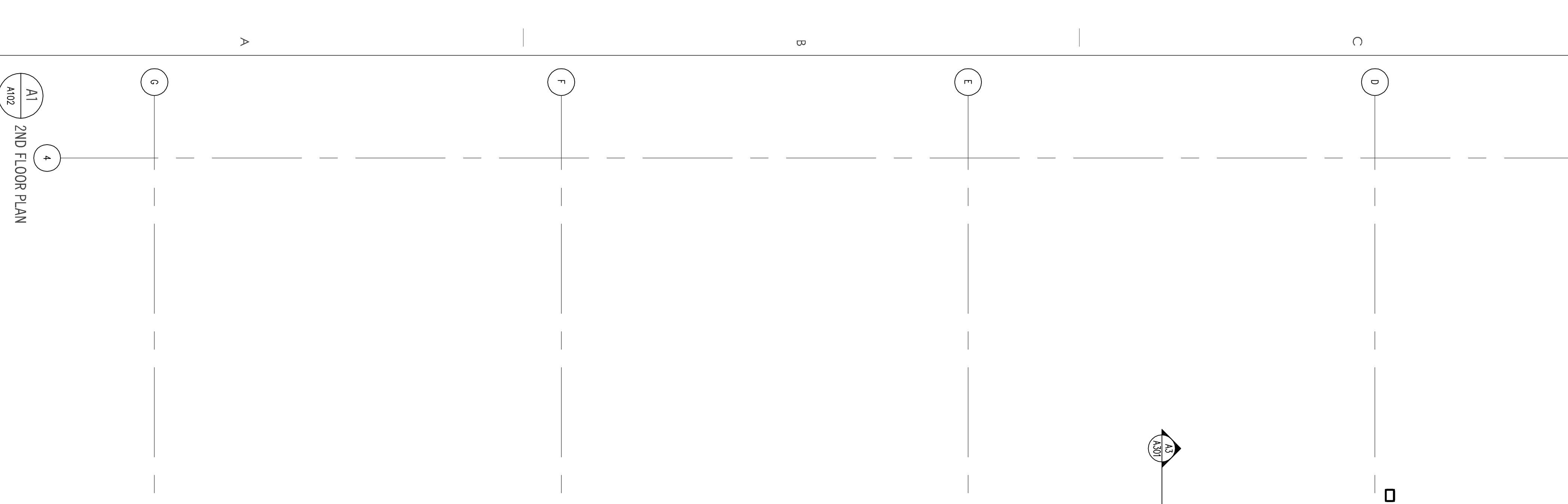
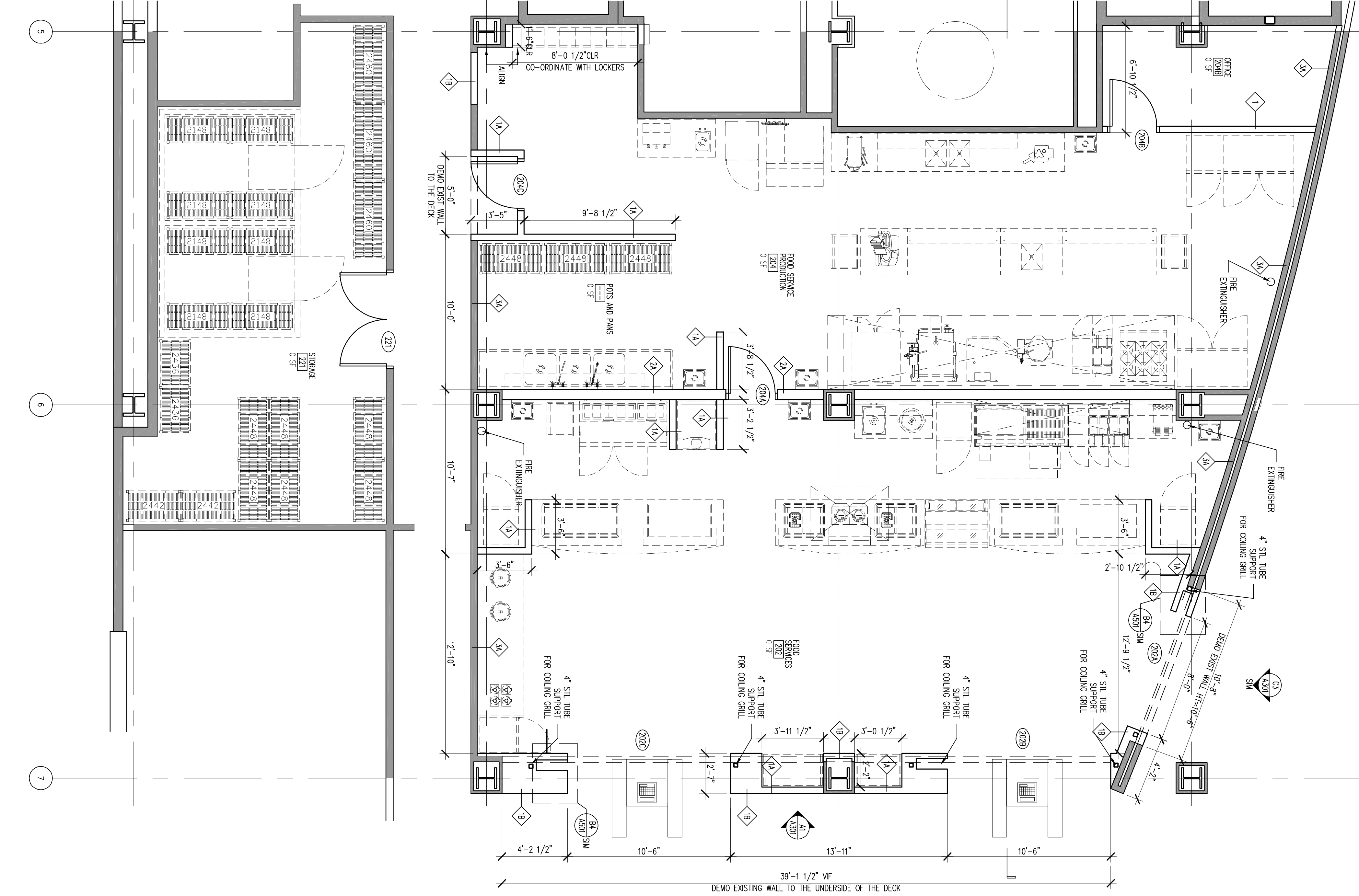
H.E. WILLIAMS ASSOCIATES
224 HUNTINGTON LANE
BLACKSBURG, VA 24060
540.951.1391

INTERIOR DESIGN

Z SQUARED INC.
14 EAST MANN STREET
OSTER BAY, NY 11771
516.922.1546

- LEGEND:**
- INDICATES EDGE OF BASE CABINETS
 - INDICATES WALL CABINETS ABOVE
 - INDICATES WALL CONSTRUCTION
 - INDICATES FULL HEIGHT INTERIOR GLAZING
 - INDICATES FULL HEIGHT INTERIOR GLAZING
 - INDICATES EXISTING WALL

- GENERAL NOTES:**
- UNLESS OTHERWISE NOTED, PLAN DIMENSIONS ARE TO COLUMN GRID CENTERLINES AND FACE OF CASUAL BOARD PARTITIONS. WALL PROTECTION, WALL COVERINGS, CERAMIC TILES AND OTHER WALL FINISHES ARE INSTALLED BEYOND DIMENSION LINE.
 - ALL WORK IS NEW UNLESS OTHERWISE NOTED.
 - DIMENSIONS NOTED "CLEAR" ARE TO FACE OF PARTITION FINISH.
 - NUMERICAL DIMENSIONS SHALL TAKE PRECEDENCE OVER SCALED DIMENSIONS.
 - WHERE DOOR IS LOCATED NEAR THE CORNER OF ROOM AND IS NOT LOCATED BY DIMENSION ON PLAN, THE DOOR SHALL BE LOCATED TO THE CORNER OF THE ROOM.
 - VERIFY ALL ROOM-IN-DIMENSIONS FOR EQUIPMENT PROVIDED IN THE CONTRACT OR BY OTHERS.
 - REVERTIVE FEATURES ARE NOT DRAWN IN THEIR ENTIRETY AND SHALL BE COMPLETELY PROVIDED AS IF DRAWN IN FULL.
 - VERIFY IN FIELD ALL EXISTING DIMENSIONS.
 - VERIFY STAIR AND RAMP DIMENSIONS.
 - PARTITIONS, ACCESS DOORS, FIBRING, COBS, ANCHORS AND INSERTS, PROVIDE ALL BASES AND BASKING REQUIRED FOR ACCESSORIES AND FOR ELECTRICAL, MECHANICAL AND OTHER EQUIPMENT.
 - SEE DRAWING ADD FOR TYPICAL PARTITION SCHEDULE AND DETAILS.
 - SEE DRAWING ADD FOR TYPICAL CEILING NOTES.
 - SEE DRAWING ADD FOR TYPICAL FLOOR NOTES.
 - CONSTRUCTION BETWEEN THE CORNERS OF THE SITE OF THE TAB IS LOCATED. ADJACENT, IN LINE PARTIONS OF DIFFERENT TYPES SHALL BE CONSTRUCTED SUCH THAT EXPOSED, FINISH SURFACES ARE FLUSH AND CONTINUOUS.
 - UNLESS OTHERWISE NOTED, PROVIDE FLOOR FINISH TRANSITIONS AT ALL LOCATIONS WHERE DIS-SIMILAR FLOOR MATERIALS MEET. AS REQUIRED, UNLESS OTHERWISE NOTED.
 - UNLESS OTHERWISE NOTED, PROVIDE FLOOR FINISH TRANSITIONS AT ALL LOCATIONS WHERE PATCH WALL FEDERATIONS AIRTOHT AT EXISTING PREP CHASES, ETC TYPICAL.
 - UNLESS OTHERWISE NOTED, PROVIDE FLOOR FINISH TRANSITIONS AT ALL LOCATIONS WHERE PATCH WALL FEDERATIONS AIRTOHT AT EXISTING PREP CHASES, ETC TYPICAL.





UMB Food Services Areas



Food Services



First Floor Cafe

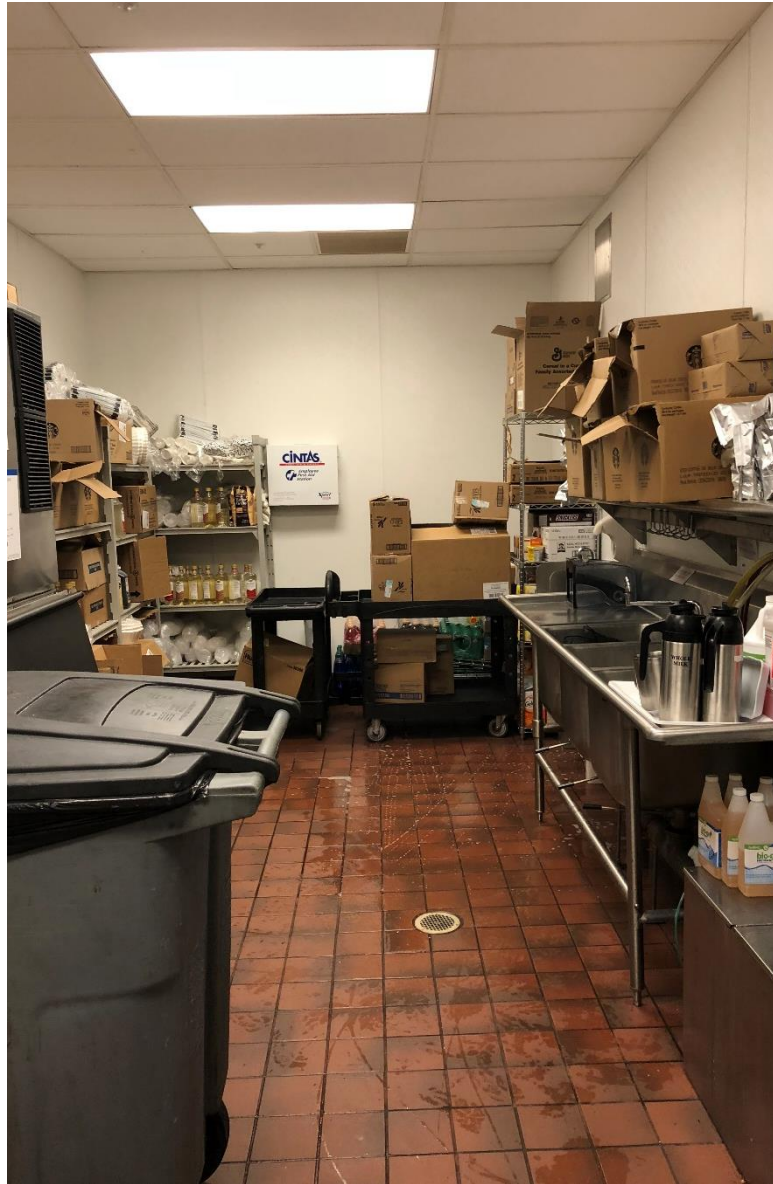


First Floor Café
-Patron/Service
Area

Dining Area

First Floor near Cafe





First Floor Café
-Work and
Prep Areas
(boh)



Second Floor - Multi-station Area

Second Floor Multi-Station Area (Patron Service Area)







Second Floor - Kitchen Retail & Catering (boh)



Second Floor Kitchen -
Retail and Catering (boh)



Dining Area Spaces on Second Floor



Catering Prep & Pantry

Room 211





Dry Storage & Walk In Cold Units

